

STANDARD 19" PANELS

Standard

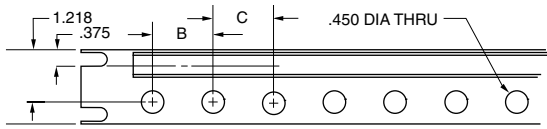


FIG A

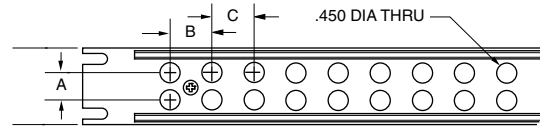


FIG B

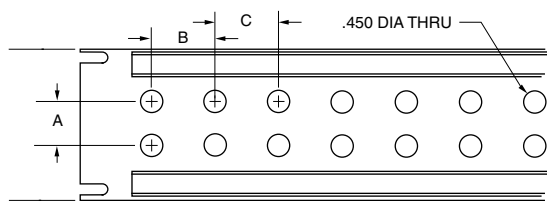


FIG C

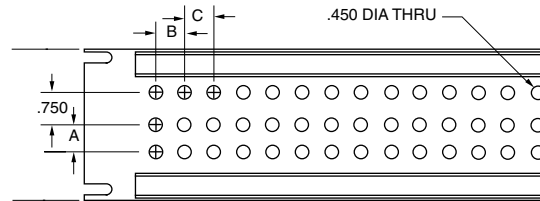


FIG D

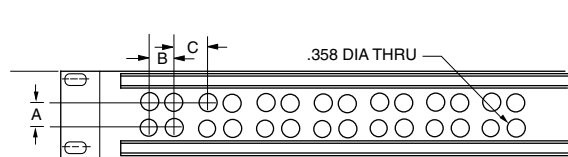


FIG E

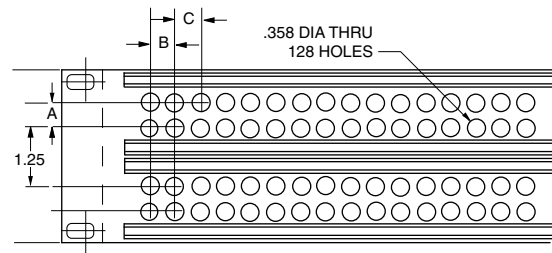


FIG F

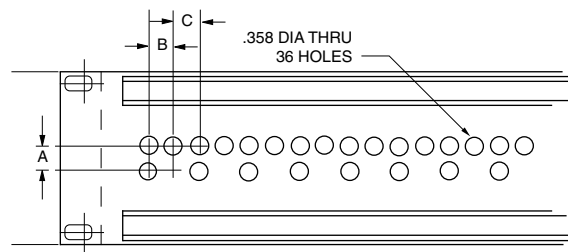


FIG G

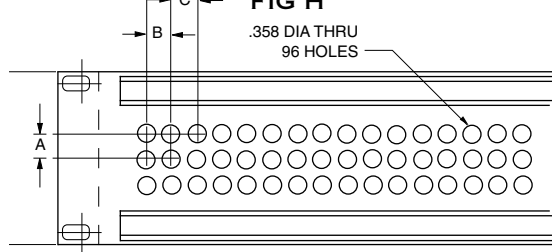


FIG H

19" Miniature Patch panels for: 50Ω J8 Series, J8D, and 75Ω Mini-WECO Jacks

# of Patch Locations	Panel Height	Hole Spacing			Fig	Non-Insulated Part Number	Insulated Part Number	Jack Type
		A	B	C				
32	1.75"	N/A	.500	.500	A	JS-32	JSI-32	J8 Series
56	1.75"	.500	.500	.625	E		JSIX-56S	Mini-WECO
56	1.75"	.500	.500	.625	E		JSIX-56SF	Mini-WECO
64	1.75"	.500	.500	.500	E		JSIX-64S	Mini-WECO
64	1.75"	.500	.500	.500	E		JSIX-64SF	Mini-WECO
64	1.75"	N/A	.500	.500	A	JS-64	JSI-64S	J8 Series
64	3.50"	.500	.500	.500	E	JS-64L	JSI-64L	J8 Series
64	3.50"	.500	.500	.500	E		JSIX-64L	Mini-WECO
96	3.50"	.500	.500	.500	J	JS-96A	JSI-96A	J8 Series
96	3.50"		Not Shown			JS-96B	JSI-96B	J8 Series
128	3.50"	.500	.500	.500	H		JSIX-128	Mini-WECO

Miniature 75Ω Coax Patch Panels ... for high density, low VSWR, 75Ω coaxial applications (microwave, sub-carrier telephone systems, etc.). Trompeter's J12 jack/ PL11C plug combination has a VSWR of 1:04:1 in the 60-80 MHz range. **Miniature 50Ω Coax Patch Panels...** for high density 50Ω patching. 19" panels tapped .312-32-2A to accept J8 and J8D jacks. .50" center-to-center vertical and horizontal hole spacing (unless otherwise noted), insulated and non-insulated panels have stiffener bars.

Note: For Front Loading Modular Panels, see pages 12. "D" mounting hole specifications, see page 60. Many other panel configurations are available, contact the factory.

PATCHING PRODUCTS

STANDARD 19" PANELS/D HOLE SPECIFICATIONS

Standard Patch Panels

See page 59 for panel figure diagrams.

Standard 19" Panels		... Insulated, Non-Insulated								
# of Holes	Panel Height	A	Hole Spacing B	C	(Foot Note)	Fig	Non-insulated Part #	Insulated Part #	Insulated Phenolic Part #	
12	1.75"	-	1.43"	1.43"	1	A	JS-12	JSI-12		
14	1.75"	-	1.21"	1.21"	1	A	JS-14	JSI-14		
16	1.75"	-	1.00"	1.00"	1	A	JS-16	JSI-16		
20	1.75"	-	.830"	.830"	1	A	JS-20	JSI-20		
24	1.75"	-	.625"	.750"	1	A	JS-24S	JSI-24S		
26	1.75"	-	.625"	.625"	1	A	JS-26	JSI-26		
28	1.75"	-	.625"	.625"	1	A	JS-28	JSI-28		
32	1.75"	.625"	1.00"	1.00"	2	B	JS-32S	JSI-32S	JSIB-32S	
40	1.75"	.625"	.830"	.830"	2	B	JS-40S	JSI-40S	JSIB-40S	
48	1.75"	.625"	.625"	.750"	2	B	JS-48S	JSI-48S	JSIB-48S	
52	1.75"	.625"	.625"	.625"	2	B	JS-52S	JSI-52S	JSIB-52S	
24	3.50"	.625	1.43"	1.43"	2	C	JS-24L	JSI-24L		
24	3.50"	1.00"	1.43"	1.43"	1	C	JS-24W	JSI-24W		
28	3.50"	.625"	1.21"	1.21"	2	C	JS-28A	JSI-28A		
28	3.50"	1.00"	1.21"	1.21"		C	JS-28W	JSI-28W		
32	3.50"	.625"	1.00"	1.00"	2	C	JS-32A	JSI-32A	JSIB-32A	
36	3.50"	.625"	.625"	.750"	2	I	JS-36	JSI-36		
36	3.50"	.625"	.830"	.830"	2	C	JS-36A	JSI-36A		
40	3.50"	.625"	.830"	.830"	2	C	JS-40	JSI-40	JSIB-40	
40	3.50"	1.00"	.830"	.830"	1	C	JS-40W	JSI-40W	JSIB-40W	
48	3.50"	.625"	.625"	.750"	2	C	JS-48	JSI-48	JSIB-48	
48	3.50"	.625"	.625"	.625"	2	C	JS-48A	JSI-48A	JSIB-48A	
52	3.50"	1.00"	.625"	.625"		C	JS-52W	JSI-52W	JSIB-52W	
52	3.50"	.625"	.625"	.625"	2	C	JS-52	JSI-52	JSIB-52	
56	3.50"	.625"	.625"	.625"	2	C	JS-56	JSI-56	JSIB-56	
72	3.50"	.625"	.680"	.680"	3	D	JSS-72	JSIS-72		

1 Will not accept dual jacks (e.g. J14, J214, J314, J74, HDVDP) 2 Will not accept jacks requiring hole spacing (A) larger than .625" 3 Will accept 3 barrel jack only

Note: JSIB (Fig. B and C) panels have .459 dia typ.

"D" Hole Specifications

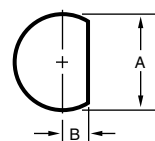
Throughout the catalog you will find "D" holes called out for bulkhead jacks. The "D" hole is the cutout pattern designated for the proper fit of bulkhead jacks into distribution panels.

"D" Hole Type Maximum panel thickness **Example: D3.148**

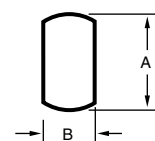
"D" Hole Type	Double "D" Hole	
	A	B
D1	.755"	.343"
D2	.630"	.281"
D3	.505"	.218"
D4	.439"	.187"
D5	.380"	.156"
D6	.317"	.128"
D7	.281"	.125"
D8	.605"	.280"
D9	.567"	.257"
D10	.192"	.079"
D11	1.005"	.470"

Many other panel hole configurations available, contact the factory.

"D" Holes



Double "D" Holes

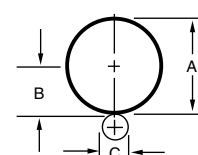
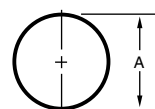


Circular Hole

	A
C1	.317"-.321"
C2	.380"-.385"
C3	.442"-.447"
C4	.474"-.480"
C5	.505"-.510"
C6	.755"-.760"

Double Circular Hole

CC1	A	B	C
	.630"	.370"	.136"-.140"



Circular Holes