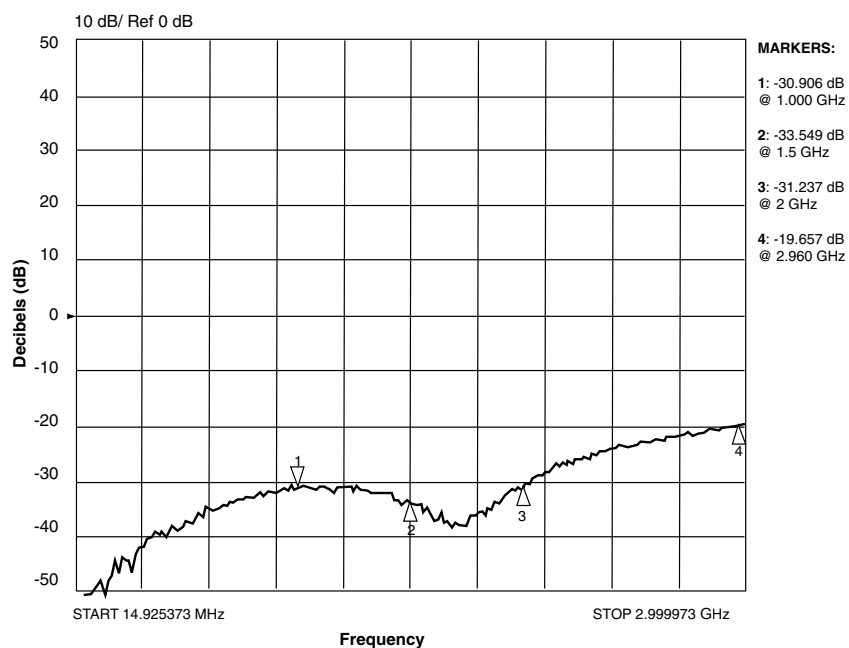


COAX 20/220 SERIES CIRCUIT BOARD JACKS

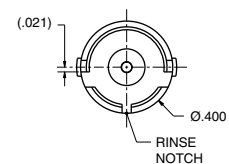
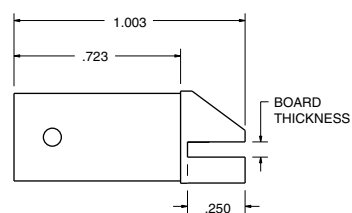
Edge Mount Circuit Board Jacks

Trompeter manufactures a wide selection of circuit board jacks.



Circuit Board Edge Mount Coax "BNC" Style Receptacle 75Ω

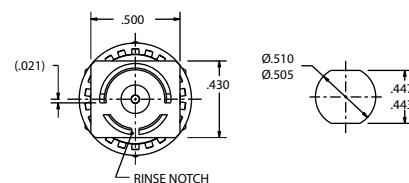
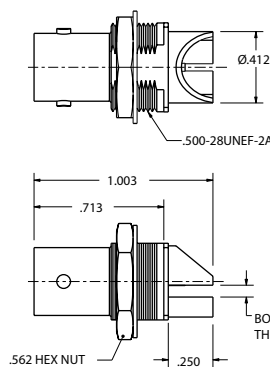
Part Number	Board Thickness
UCBJE20-1	.060 - .064
UCBJE20-2	.028 - .033



Circuit Board Bulkhead Edge Mount Coax "BNC" Style Receptacle 75Ω

Max Panel Thickness: .179

Part Number	Board Thickness
UCBBJE20-1	.060 - .064
UCBBJE20-2	.028 - .033
UCBBJE20-3	.084
UCBBJE20-4	.120

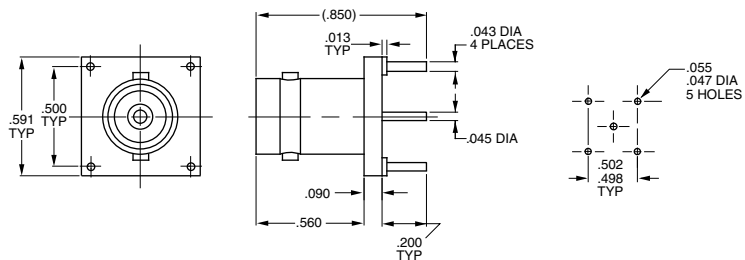


COAX CONNECTORS

COAX 20/220 SERIES CIRCUIT BOARD JACKS

Circuit Board Jacks...

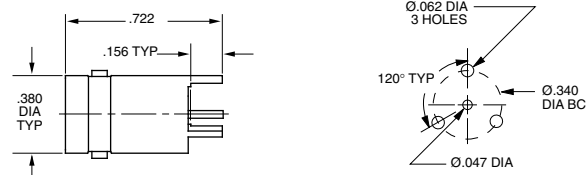
Trompeter manufactures a wide selection of circuit board jacks, Shown below are the most commonly requested designs. For custom designs, contact the factory.



Circuit Board Jack
Straight, 4-leg

75Ω

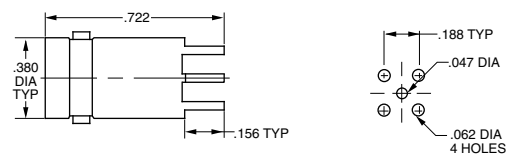
UCBJ20F



Circuit Board Jack
Straight, 3-leg

50Ω

CBJ20



Circuit Board Jack
Straight, 4-leg

50Ω

CBJ22

COAX 20/220 SERIES CIRCUIT BOARD JACKS

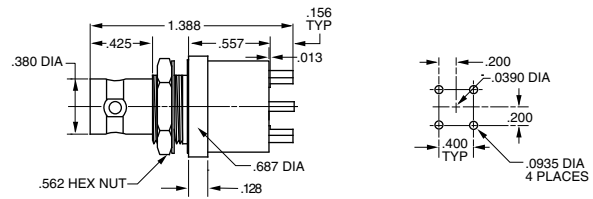
<p>Circuit Board Jack Straight, 4-leg</p>	<p>75Ω</p>	<p>UCBJ224</p>																																																	
<p>Circuit Board Jack Straight, 3-leg</p>	<p>75Ω</p>	<p>UCBJ223</p>																																																	
<p>Right Angle Coax BNC Circuit Board Jack</p>	<p>75Ω</p>	<p>UCBJR220</p>																																																	
<p>Right Angle Coax BNC Circuit Board Jack</p>	<p>50Ω</p>	<p>CBJR220</p>																																																	
<p>Circuit Board Jack Right Angle, Tall Version</p>	<p>50Ω</p>	<p>CBJR20A</p>																																																	
<table border="1"> <thead> <tr> <th>MODEL NO.</th> <th>LTR CODE</th> <th>OHM</th> <th>A DIM</th> <th>B DIM</th> <th>C DIM</th> <th>D DIM</th> <th>E DIM</th> </tr> </thead> <tbody> <tr> <td>CBJR20</td> <td>-</td> <td>50</td> <td>.046</td> <td>.24</td> <td>.090</td> <td>.050</td> <td>.0625</td> </tr> <tr> <td>UCBJR20</td> <td>-</td> <td>75</td> <td>.029</td> <td>.24</td> <td>.090</td> <td>.050</td> <td>.0625</td> </tr> </tbody> </table> <table border="1"> <thead> <tr> <th>MODEL NO.</th> <th>LTR CODE</th> <th>OHM</th> <th>A DIM</th> <th>B DIM</th> <th>C DIM</th> <th>D DIM</th> <th>E DIM</th> </tr> </thead> <tbody> <tr> <td>CBJR20A</td> <td>A</td> <td>50</td> <td>.046</td> <td>.34</td> <td>.090</td> <td>.058</td> <td>.070</td> </tr> <tr> <td>UCBJR20A</td> <td>A</td> <td>75</td> <td>.029</td> <td>.34</td> <td>.090</td> <td>.058</td> <td>.070</td> </tr> </tbody> </table>			MODEL NO.	LTR CODE	OHM	A DIM	B DIM	C DIM	D DIM	E DIM	CBJR20	-	50	.046	.24	.090	.050	.0625	UCBJR20	-	75	.029	.24	.090	.050	.0625	MODEL NO.	LTR CODE	OHM	A DIM	B DIM	C DIM	D DIM	E DIM	CBJR20A	A	50	.046	.34	.090	.058	.070	UCBJR20A	A	75	.029	.34	.090	.058	.070	
MODEL NO.	LTR CODE	OHM	A DIM	B DIM	C DIM	D DIM	E DIM																																												
CBJR20	-	50	.046	.24	.090	.050	.0625																																												
UCBJR20	-	75	.029	.24	.090	.050	.0625																																												
MODEL NO.	LTR CODE	OHM	A DIM	B DIM	C DIM	D DIM	E DIM																																												
CBJR20A	A	50	.046	.34	.090	.058	.070																																												
UCBJR20A	A	75	.029	.34	.090	.058	.070																																												

COAX CONNECTORS

COAX 20/220 SERIES CIRCUIT BOARD JACKS

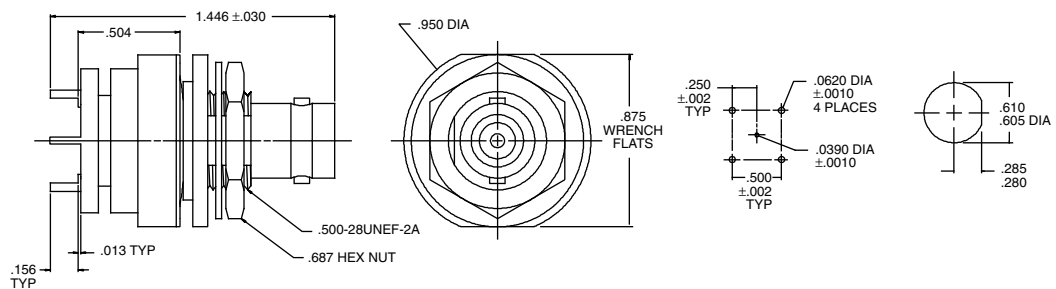
Non-insulated Circuit Board
bulkhead Jack
Straight, 4-leg
Mounting Hole: D3.109

75Ω

UCBBJ29

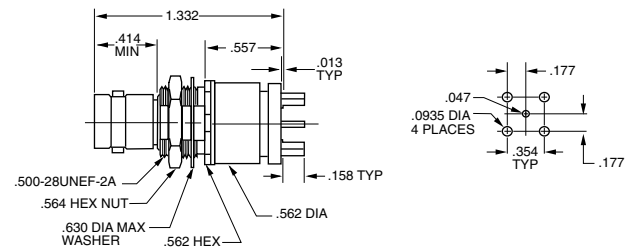
Insulated circuit board
Bulkhead Jack Coaxial BNC
Ground Filter Insulated 4-Post
Straight
Mounting Hole: .093

50Ω

CBBJ26GF
UCBBJ26GF

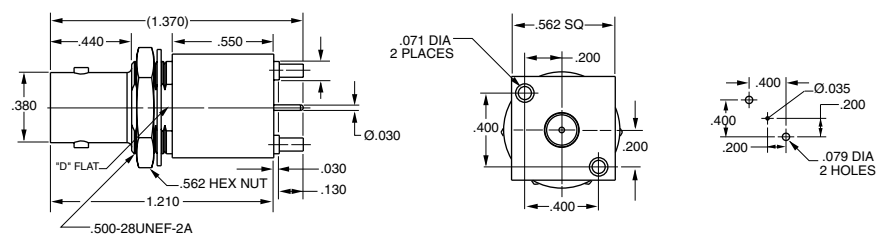
Insulated circuit board
Bulkhead Jack
Straight
Mounting Hole: D3.156

50Ω

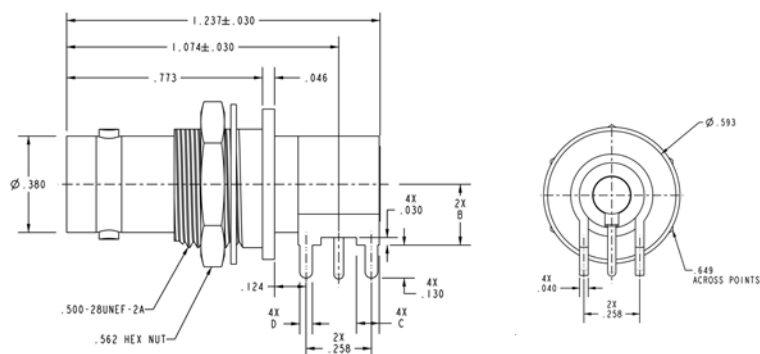
CBBJ26

Circuit Board Bulkhead Jack
Straight
Mounting Hole: D3.060

75Ω

UCBBJ23

COAX 20/220 SERIES CIRCUIT BOARD JACKS



Right Angle Circuit Board Bulkhead Jack

Non-Insulated
Non-Insulated

50Ω
75Ω

CBBJR29
UCBBJR29

MODEL #	LTR CODE	IMPD Ω	A DIA	B DIM	C DIM	D DIM	E DIA
CBBJR29	----	50	.046	.24	.090	.050	.0625
UCBBJR29	----	75	.029				
CBBJR29A	A	50	.046	.24	.090	.058	.070
UCBBJR29A	A	75	.029				

RoHS Compliant

Non-Insulated
Non-Insulated

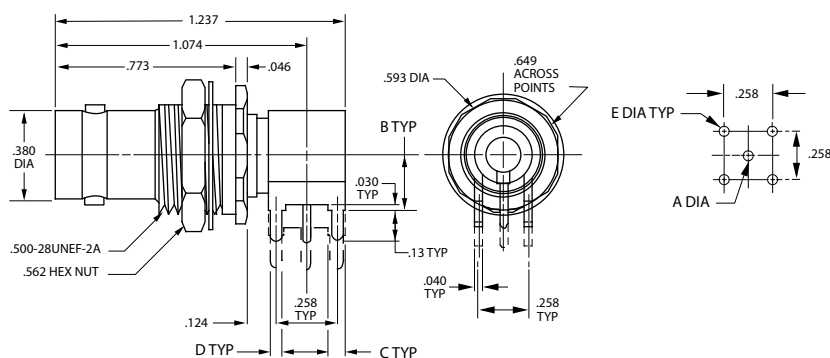
50Ω
75Ω

CBBJR29-RC
UCBBJR29-RC

MODEL #	LTR CODE	IMPD Ω	A DIA	B DIM	C DIM	D DIM	E DIA
CBBJR29-RC	----	50	.046	.24	.090	.050	.0625
UCBBJR29-RC	----	75	.029				
CBBJR29A-RC	A	50	.046	.24	.090	.058	.070
UCBBJR29A-RC	A	75	.029				

Mounting Holes: D3.156 (Insulated)

Maximum Panel Thickness: .179 D-Hole: D3



Right Angle Circuit Board Bulkhead Jack

Insulated
Insulated

50Ω
75Ω

CBBJR26
UCBBJR26

MODEL #	LTR CODE	IMPD Ω	A DIA	B DIM	C DIM	D DIM	E DIA
CBBJR26	----	50	.046	.24	.090	.050	.0625
UCBBJR26	----	75	.029				
CBBJR26A	A	50	.046	.34	.090	.058	.070
UCBBJR26A	A	75	.029				

RoHS Compliant

Insulated
Insulated

50Ω
75Ω

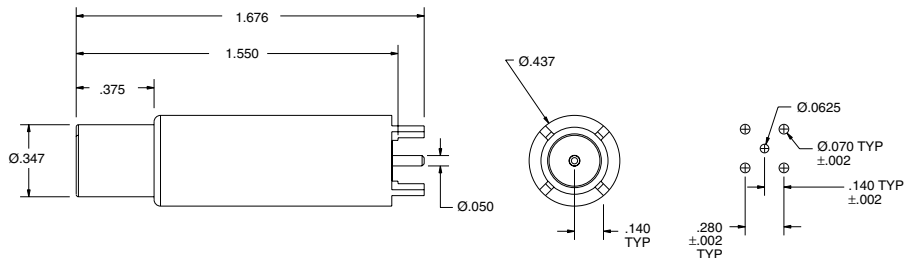
CBBJR26
UCBBJR26

MODEL #	LTR CODE	IMPD Ω	A DIA	B DIM	C DIM	D DIM	E DIA
CBBJR26-RC	----	50	.046	.24	.090	.050	.0625
UCBBJR26-RC	----	75	.029				
CBBJR26A-RC	A	50	.046	.34	.090	.058	.070
UCBBJR26A-RC	A	75	.029				

Mounting Holes: D3.156 (Insulated)

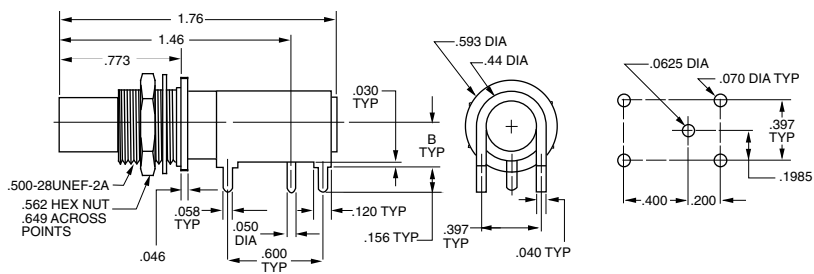
COAX CONNECTORS

MINI-WECO COAX CIRCUIT BOARD JACKS



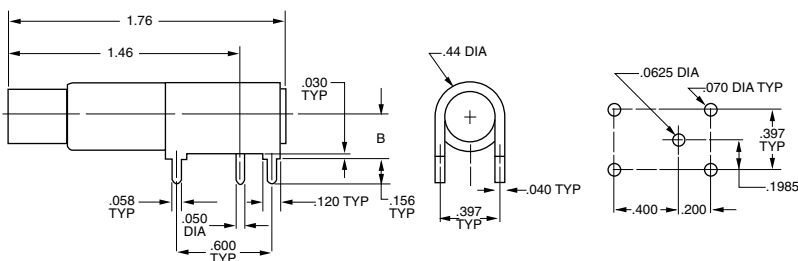
Circuit Board Mounting
Mini-WECO Coaxial Patch Jack
75Ω (.296 Size) **CBJ12**

MODEL NO.	LTR CODE	B DIM
CBBJR12	-	.24
CBBJR12A	A	.34



Circuit Board Bulkhead Mounting
Mini-WECO Patch Jack
75Ω Right Angle **CBBJR12** B = .24
Long Leg Version **CBBJR12A** B = .34
Mounting Hole: D3.250

MODEL NO.	LTR CODE	B DIM
CBJR12	-	.24
CBJR12A	A	.34



Circuit Board Mounting
Mini-WECO Patch Jack
75Ω Right Angle **CBJR12** B = .24
Long Leg Version **CBJR12A** B = .34