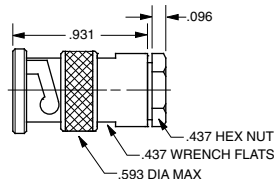


TWO-PIN POLARIZED 30/330 SERIES TWBNC/TWTNC

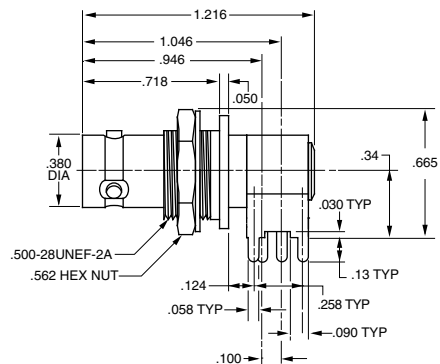
Mil-C-3655 Interface

PL30 Shown

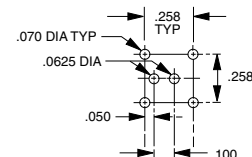


Cable Plug
Wrench Crimp, Two-pin polarized

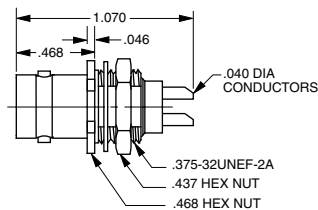
2-lug
Threaded **PL30-△**
PL330-△



Circuit Board Bulkhead Jack
Right Angle-Two-pin
polarized Twinax (TWBNC)
Mounting Hole: D3.125

CBBJR39A

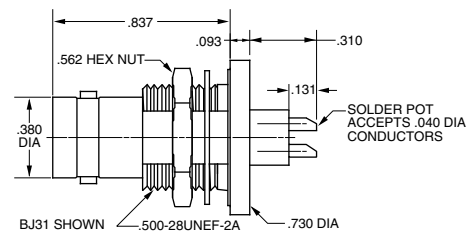
BJ30 Shown



Bulkhead Jack
Front mount, Solder pot
Two-pin Polarized

2-lug
Threaded **BJ30**
BJ330
Mounting Hole: D5.130

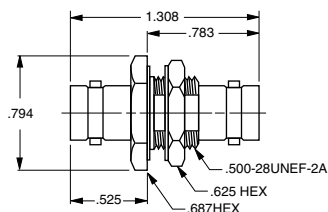
BJ31 Shown



Bulkhead Jack
Rear mount, Solder pot
Two-pin polarized

2-lug
Threaded **BJ31**
BJ331
Mounting Hole: D3.280

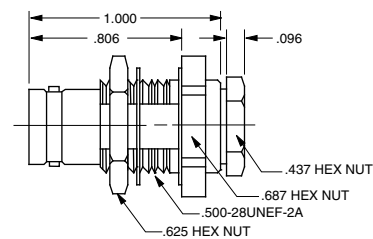
BJ38 Shown



Feed-Through Jack
Two-pin polarized

2-lug
Threaded **BJ38**
BJ338
Mounting Hole: D3.160

BJ39 Shown



Bulkhead Cable Jack
Rear mount, Wrench Crimp
Two-pin polarized

2-lug
Threaded **BJ39-△**
BJ339-△
Mounting Hole: D3.218

△ Refers to Cable Group Table, see pages 78-120. "D" mounting holes are on page 60. Note: Only 30/330 Series have two-pin polarizations. Note: These connectors are still available, although we recommend using concentric (70 series) twinax for all new applications.