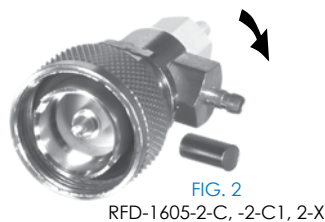


SPECIFICATIONS	GRP	CABLE GROUPS
ELECTRICAL SPECIFICATIONS IMPEDANCE: 50 Ω WORKING VOLTAGE RATING: 2700 VRMS FREQUENCY RANGE: DC TO 7.5 GHz MECHANICAL SPECIFICATIONS MATING: M 29-1.5 THREADED COUPLING INTERFACE: ITL-SPEC-CECC-22190 CABLING: CLAMP, SOLDER AND CRIMP PLATING S - SILVER DIELECTRIC MATERIAL T - TEFLON		FOR THESE CABLE TYPES
	C	TIMES LMR-195; RG-58, 58A, 58C, 141, 141A/U; ANDREW CNT-195, CNT-195-DB, CNT-195-FR; BELDEN 7806A, 8219, 8240, 8259, 8262, 9201, 9203, 9310, 9311; COMMSCOPE WBC-195, WBC-195R, 0268, TCOM-195, TCOM-195-FR; HARBOUR HPF195
	C1	RG-55, 55A, 55B, 142, 142A, 142B, 223, 400/U; ALPHA 9055, 9055B, 9223; BELDEN 7806A, 83242, 84142
	C2	TIMES LMR-200, MSI-22; ALPHA 9848; BELDEN 7807A; COMMSCOPE AMC-58LL, WBC-200, WBC-200R, TCOM-200, TCOM-200-FR; HARBOUR HPF200
	E	TIMES AA-4478; RG-8, 8A, 213/U; ALPHA 9008, 9213; BELDEN 8267, 9251, 9880, 89880; INTERCOMP 4082, 22132
	F	RG-9, 9A, 9B, 214/U; ALPHA 9214; BELDEN 8242, 8268
	I	TIMES AA-5886, AA-6146, LMR-400, LMR-400 ULTRAFLEX; RG-8/U TYPE; ANDREW CNT-400, CNT-400AL, CNT-400-DB, CNT-400-FR, CNT-400-FRP; BELDEN 7810A, 8214, 9913; COMMSCOPE TCOM-400, TCOM-400-FR, TCOM-400-PUR, WBC-400, WBC-400R, CUSHCRAFT ULTRALINK TL93605; HARBOUR HPF400
	L2	TIMES LMR-600, LMR-600 ULTRAFLEX; ANDREW CNT-600, CNT-600-DB, CNT-600-FR, ; COMMSCOPE TCOM-600, TCOM-600-FR, TCOM-600-PUR, WBC-600, WBC-600R
	PL	BELDEN 89913
	SR1	.085 SEMI RIGID; RG-405/U; BELDEN 1671A; RD-179
	SR2	.141 SEMI RIGID; RG-402/U; BELDEN 1673A
	SR3	.250 SEMI RIGID; RG-401/U
	X	TIMES LMR-240, LMR-240 ULTRAFLEX; RG-8X; ANDREW CNT-240, CNT-240AL, CNT-240ALS, CNT-240-DB, CNT-240-FR, CNT-240-W; BELDEN 9258; COMMSCOPE TCOM-240, TCOM-240-FR, WBC-240, WBC-240R; HARBOUR HPF240; MICRO 8/U; REMEE 1600; SAXTON 8315
FOR A MORE EXTENSIVE LISTING OF CABLE GROUPS, PLEASE REFER TO PAGES 134-145		

Combination Connectors

Our 7-16 DIN combination connectors offer great versatility, allowing assembly in either a right-angle or straight position. The images on this page illustrate both configuration possibilities.



7-16 DIN CONNECTORS AND IN-SERIES ADAPTERS — Continued

7-16 DIN

7-16 DIN



FIG. 5
RFD-1630-2-C, -2-C1



FIG. 6
RFD-1630-2-E



FIG. 7
RFD-1631-2L2



FIG. 8
RFD-1640-2

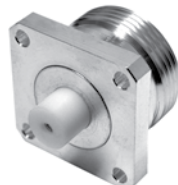


FIG. 9
RFD-1643-HS

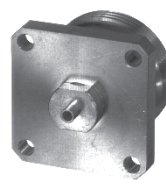


FIG. 10
RFD-1644-2SR1, -2SR2,
-2SR3



FIG. 11
RFD-1650-2



FIG. 12
RFD-1652-2



FIG. 13
RFD-1653-2



FIG. 14
RFD-1658-2



FIG. 15
RFD-1660-2

PHOTOS FOR REFERENCE ONLY, SHOWN AT 60% ACTUAL SIZE

FOR MOUNTING CONFIGURATIONS REFER TO PAGES 149-164

PART #	FIG	DESCRIPTION	CBL GRP	NOTES	PLATING			RECOMMENDED TOOL
					BDY	P/C	DIE	
RFD-1604-2I	1	MALE CRIMP	I	STRAIGHT, FOR BELDEN 9913 & TIMES LMR-400	S	S	T	RFA-4009-205
RFD-1604-2L2	1	MALE CRIMP	L2	STRAIGHT, FOR TIMES LMR-600	S	S	T	RFA-4009-201
RFD-1605-2-C	2	MALE CRIMP	C, C2	COMBINATION STRAIGHT OR RIGHT ANGLE, FOR RG-58/U & TIMES LMR-200	S	S	T	RFA-4009-206
RFD-1605-2-C1	2	MALE CRIMP	C1	COMBINATION STRAIGHT OR RIGHT ANGLE, FOR RG-142/U & RG-55/U	S	S	T	RFA-4009-206
RFD-1605-2-E	3	MALE CRIMP	E, F, I, PL	COMBINATION STRAIGHT OR RIGHT ANGLE, FOR RG-8/U, RG-214/U, BELDEN 9913 & BELDEN 89913 PLENUM	S	S	T	RFA-4009-205
RFD-1605-2-L2	3	MALE CRIMP	L2	COMBINATION STRAIGHT OR RIGHT ANGLE, FOR TIMES LMR-600	S	S	T	RFA-4009-201
RFD-1605-2-X	2	MALE CRIMP	X	COMBINATION STRAIGHT OR RIGHT ANGLE, FOR RG-8/X & TIMES LMR-240	S	S	T	RFA-4009-203
RFD-1625-2-E	4	FEMALE CLAMP	E, I, PL	COMBINATION STRAIGHT OR RIGHT ANGLE, FOR RG-8/U, BELDEN 9913 & BELDEN 89913 PLENUM	S	S	T	
RFD-1630-2-C	5	FEMALE CRIMP	C, C2	COMB. STRAIGHT OR R/A, FOR RG-58/U & TIMES LMR-200	S	S	T	RFA-4009-206
RFD-1630-2-C1	5	FEMALE CRIMP	C1	COMBINATION STRAIGHT OR RIGHT ANGLE, FOR RG-142/U	S	S	T	RFA-4009-206
RFD-1630-2-E	6	FEMALE CRIMP	E, I, PL	COMBINATION STRAIGHT OR RIGHT ANGLE, FOR RG-8/U, BELDEN 9913 & BELDEN 89913 PLENUM	S	S	T	RFA-4009-205
RFD-1631-2L2	7	FEMALE CRIMP	L2	STRAIGHT, FOR TIMES LMR-600	S	S	T	RFA-4009-201
RFD-1640-2	8	FEMALE PANEL MOUNT		4-HOLE FLANGE WITH .111 ID SOLDER CUP	S	S	T	
RFD-1643-HS	9	FEMALE		4-HOLE FLANGE RECEPTACLE	S	S	S	
RFD-1644-2SR1	10	FEMALE	SR1	4-HOLE FLANGE, S,S,T; FOR .085 SEMI RIGID CABLE				
RFD-1644-2SR2	10	FEMALE PANEL MOUNT	SR2	4 HOLE FLANGE FOR .141 SEMI-RIGID	S	S	T	
RFD-1644-2SR3	10	FEMALE PANEL MOUNT	SR3	4 HOLE FLANGE FOR .250 SEMI-RIGID	S	S	T	
RFD-1650-2	11	BARREL ADAPTER		7-16 DIN MALE TO 7-16 DIN MALE	S	S	T	
RFD-1652-2	12	RIGHT ANGLE ADAPTER		7-16 DIN MALE TO 7-16 DIN FEMALE	S	S	T	
RFD-1653-2	13	BARREL ADAPTER		7-16 DIN FEMALE TO 7-16 DIN FEMALE	S	S	T	
RFD-1658-2	14	RIGHT ANGLE ADAPTER		7-16 DIN FEMALE TO 7-16 DIN FEMALE	S	S	T	
RFD-1660-2	15	BARREL ADAPTER		7-16 DIN FEMALE TO 7-16 DIN MALE	S	S	T	