

# U S B A d a p t e r



Push Pull locking



USB type B



D-shape metal housing



USB type B



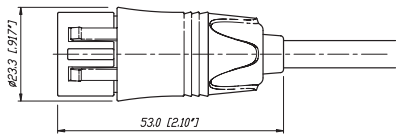
## USB Patch Cable



NKUSB-\*

- USB 2.0 compliant - data rate up to 480 MBit/s
- Dust and water resistant sealing in combination with NAUSB-W\*
- Push Pull mating design provides secure locking system if mated with NAUSB-W\*
- Shielded connection - high noise immunity and EMI protection
- Ready made patch cables (1 m, 3 m and 5 m) with removable rugged diecast cable carrier
- Mates with conventional USB receptacles if cable carrier is removed

### NKUSB



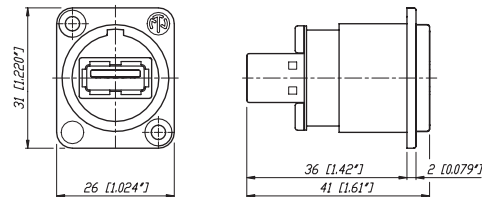
## USB Receptacle



NAUSB-W

- USB 2.0 gender changer type A-B (B-A)
- Ideal for audio networking and integration of computerbased equipment into audio systems
- Lockable connection and water protection if mated with Neutrik USB cable NKUSB-\*
- Optional screen to chassis grounding
- Reversible insert offering type A or B on front or rear end
- Universally accepted standard D-shape housing

### NAUSB-W



# U S B A d a p t e r

## Technical Data

### Mechanical and Electrical

Conform with USB 2.0 Standard

Receptacle

Patch Cable

•

•

### Material

Shell Zinc diecast (ZnAl4Cu1)

Shell plating Nickel or black Chrome

Insert PBTP 15% GR

Contacts Brass (CuZn39Pb3)

Contact finish Gold

•

•

•

Nickel

PBTP 15% GR

PVC

•

•

•

•

### Environmental

Operating temperature -25°C to +85°C

Flammability UL94 V-0

•

•

•

•

## Ordering Information

### Chassis

NAUSB-W USB A – USB B Adapter (reversible), sealing ring, optional grounding, nickel housing

NAUSB-W-B USB A – USB B Adapter (reversible), sealing ring, optional grounding, black housing

### Patch Cable

NKUSB-\* USB 2.0 cable with overmolded flex relief and metal cable carrier, standard lengths: 1, 3, 5 m

## Accessories



DSS-\*



SCM



SCDX



SCDP-\*

DSS-\* Lettering plate for D series, colored plastic (\*: 0- Black, 1- Brown, 2- Red, 3- Orange, 4- Yellow, 5- Green, 6- Blue, 7- Violet, 8- Grey, 9- White)

SCM Plastic sealing cover to protect the Firewire connectors against dust and moisture.

SCDP-\* D-Size sealing gaskets, color coding (\*: 0- black, 2- red, 4- yellow, 5- green, 6- blue, 9- white)

SCDX Hinged cover seals D-size chassis connectors, IP42 rated

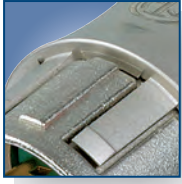
NZP1RU-8 Panel1RU housing with 8 D-shape cutouts

NZP1RU-12 Panel1RU housing with 12 D-shape cutouts

\*: 0 - Black, 1- Brown, 2 - Red, 3 - Orange, 4 - Yellow, 5 - Green, 6 - Blue, 7 - Violet, 8 - Grey, 9 - White



# HDMI Adapter



Push Pull locking



HDMI 1.3a



D-shape metal housing



HDMI 1.3a receptacle



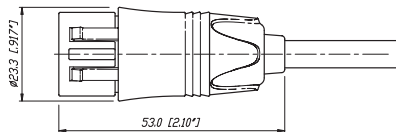
## HDMI Patch Cable



NKHDMI-\*

- HDMI 1.3a - data rate up to 3.5 GBit/s
- Push Pull mating design provides secure locking system if mated with NAHDMI-W\*
- Shielded connection - high noise immunity and EMI protection
- Ready made patch cables (1 m, 3 m and 5 m) with removeable rugged diecast cable carrier
- Mates with conventional HDMI receptacles if cable carrier is removed
- Dust and water resistant sealing in combination with NAHDMI-W\*

NKHDMI-\*



## HDMI Receptacles

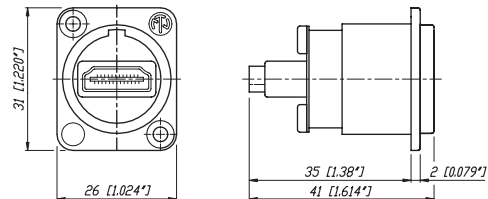


NAHDMI-W



- Audio / Video interface to transmit any digital TV and PC Video format including high-definition video (HDTV).
- HDMI 1.3a feedthrough adapter with 19-pole HDMI receptacle at both ends
- Optional screen to chassis grounding
- Universally accepted standard D-shape housing

NAHDMI-W



# Firewire Adapter



D-shape metal housing



IEE 1394 receptacle

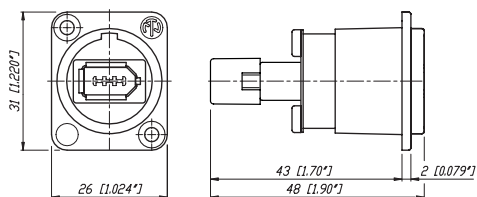
## Firewire Receptacle



NA1394-6-W

- Ideal for audio networking and integration of digital equipment into audio systems
- Firewire feedthrough adapter with 6-pole IEEE 1394 receptacle at both ends
- Optional screen to chassis grounding
- Universally accepted standard D-shape housing

NA1394-6-W



# HDMI and Firewire Adapter

## Technical Data

### Mechanical and Electrical

	HDMI Receptacle	HDMI Patch Cable	Firewire
Conform with Standards	HDMI 1.3a	HDMI 1.3a	IEEE

### Material

Shell	Zinc diecast (ZnAl4Cu1)	●	●	●
Shellplating	Nickel or black Chrome	●	●	●
Insert		ABS	Nickel	PBTP 15% GR
		-	PVC	-
Contacts	Brass (CuZn39Pb3)	●	●	●
Contact finish	Gold	●	●	●

### Environmental

Operating temperature	-25°C to +85°C	●	●	●
Flammability	UL94 V-0	●	●	●

### Ordering Information Firewire

NA1394-6-W	6-pole Firewire Adapter (IEEE 1394), sealing ring, optional grounding, nickel housing
NA1394-6-W-B	6-pole Firewire Adapter (IEEE 1394), sealing ring, optional grounding, black housing

### Ordering Information HDMI

#### Chassis

NAHDMI-W	HDMI – HDMI Adapter, sealing ring, optional grounding, nickel housing
NAHDMI-W-B	HDMI – HDMI Adapter, sealing ring, optional grounding, black housing

#### Patch Cable

NKHDMI-*	HDMI 1.3a cable with overmolded flex relief and metal cable carrier, standard lengths: 1, 3, 5 m
----------	--

#### Accessories



DSS-\*



SCM



SCDX



SCDP-\*

DSS-*	Lettering plate for D series, colored plastic
SCM	Plastic sealing cover to protect the Firewire connectors against dust and moisture.
SCDP-*	D-Size sealing gaskets, color coding (*: 0- black, 2- red, 4- yellow, 5- green, 6- blue, 9- white)
SCDX	Hinged cover seals D-size chassis connectors, IP42 rated
NZP1RU-8	Panel1RU housing with 8 D-shape cutouts
NZP1RU-12	Panel1RU housing with 12 D-shape cutouts

\*: 0 - Black, 1 - Brown, 2 - Red, 3 - Orange, 4 - Yellow, 5 - Green, 6 - Blue, 7 - Violet, 8 - Grey, 9 - White

