



Robust metal housing



XL-solder contacts



1/4" flat tabs

speakON® STX Series Chassis Connectors



NLT4FP-BAG



NLT4MD-V



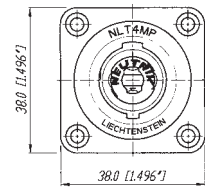
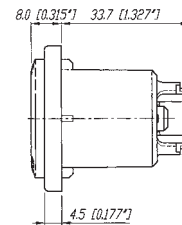
NLT4MP-BAG



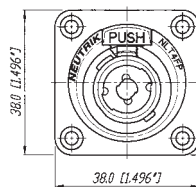
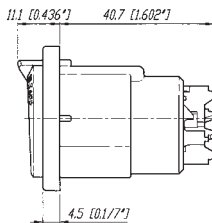
NLT8MP-BAG

- Extremely robust metal housing designed for harsh and demanding environment
- Weatherproof design features sealing gaskets
- 4 type range - also male cable connector and female receptacle on 4-pole version
- All-metal housing makes the STX Series rugged and durable
- Weatherproof built-in gasket meets IP 54 protection class (4 pole)
- Ideal product for touring applications and harsh environments
- Best electrical performance up to 50 A audio current
- Uses precise "Quick Lock" system
- Mates with all currently available speakON products
- 4 pole version has UL recognized components, CSA listed

NLT4MP



NLT4FP



NLT8MP

