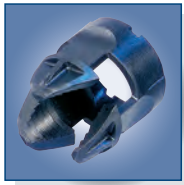


Quick lock



Chuck type strain relief



Right angle conversion



speakON SPX Series 4 Pole Cable Connector



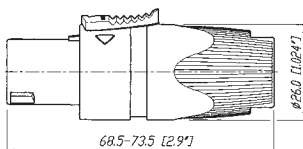
NL4FX



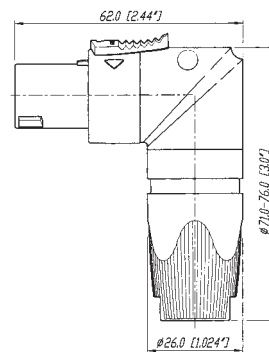
NL4FRX

- Current rating 40 A rms continuous
- Up to 50 A audio signal, duty cycle 50%
- Only 3 parts, easy to assemble
- High impact materials - long-lasting and reliable
- Easy and extremely precise locking system "Quick Lock"
- Improved grip on latch
- 1 piece strain relief, chuck for 7 to 14.5 mm cable O.D.
- Color coding possible
- Improved screw-type termination for highest pull-out force
- Integrated design guarantees "Made by NEUTRIK®"

NL4FX



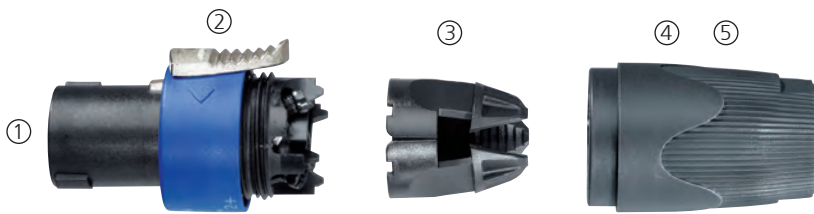
NL4FRX



Design Criteria

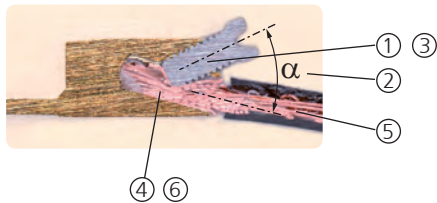
This second generation of speakON connectors features higher current rating for the operation of high power speakers and amplifiers carrying more than 1000 Watts. Only 3 parts make it fast and easy to assemble with a more reliable performance.

Our unique design makes it possible to change easily and quickly from a straight connector to the right-angle version, even without disconnecting the cable.



- ① Easy and extremely precise locking system "Quick Lock"
- ② Improved grip on latch
- ③ 1 piece strain relief, chuck for 8 to 14.5 mm cable O.D., with accessory NLRR 5-8 mm
- ④ Color coding possible
- ⑤ Integrated design guaranties "Made by NEUTRIK®"

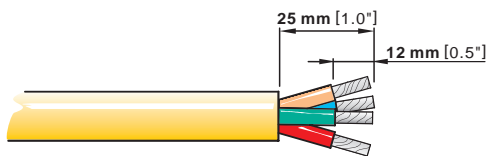
Improved SPX-Series screw contacts! (Wire position after assembly)



- ① Progressive clamping as wire is pushed forward
- ② Acts as screw locking device due to side forces
- ③ Large combi drive - M4 screw
- ④ Wire size 1.5 - 4 mm² (AWG 12) for 6 mm² (AWG 10) remove screw & solder
- ⑤ Pull out force > 300 N @ 80 cNm
- ⑥ Gas tight connection

Assembly

Prepare cable as shown.



HINT:

For easy wiring especially of thick cables, first screw on the inner contacts 1+ and 2+ and afterwards the outer contacts 1- and 2- !
Use screwdriver Pozidriv #1 only.

