



Plane nose



Quick fix nose



Quick fix nut

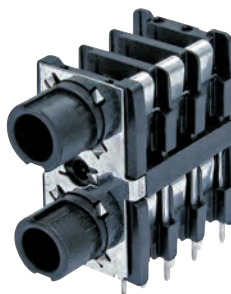


Fully threaded nose

Stacking Jacks



NSJ8HC



NSJ12HL



NSJ12HH-1

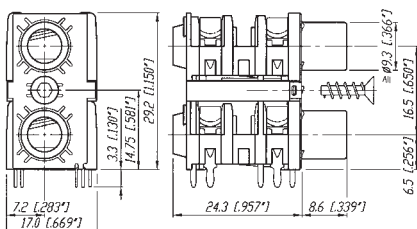


NSJ12HF-1

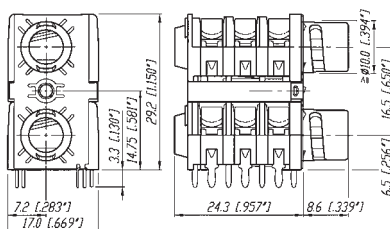
- Mono and stereo dual slim jack socket for PCB mounting with switch contacts
- Mounting method by either two quick fix or threaded nuts or one single center screw

- Highest board packing density as two jacks are in a single footprint, fit in 1 RU
- Version in fully and half threaded nose, full nose, quick-fit and plane

NSJ8HC

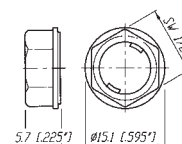


NSJ12HL

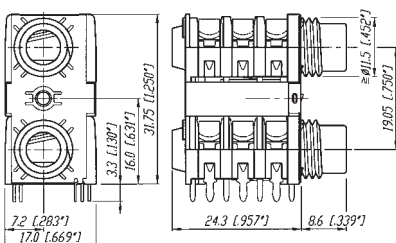


NSJ-NUT-B

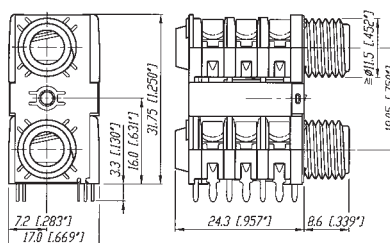
(Quick fix nut)



NSJ12HH-1



NSJ12HF-1



NRJ-NUT-B

