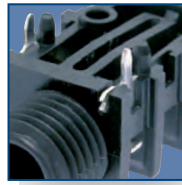




Half threaded nose



Chrome nose

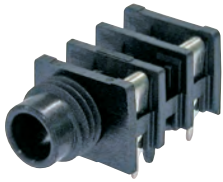


Chassis ground contact

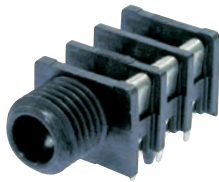


Gold plated contact

Slim Jacks



NRJ4HH-1



NRJ6HF-1



NRJ6HM-1



NRJ-NUT-B



NRJ-NUT-MK



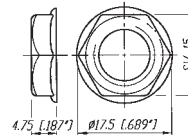
NRJ-NUT-MS



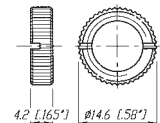
NRJ-NUT-MN
(Metal Nose only)

- High board packing densities
- Nose type in
 - half thread
 - fully threaded
 - metal
- *-1 versions meet the requirements of EMC rules through efficient chassis grounding system
- Retention spring ensures optimum grip on inserted plugs, avoiding the chance of lost connection
- All Slim line jacks have PCB horizontal mount pins
- Mounting nuts in different versions available - must be ordered separately

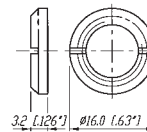
NRJ-NUT-B



NRJ-NUT-MK

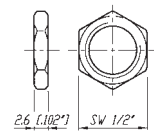


NRJ-NUT-MS

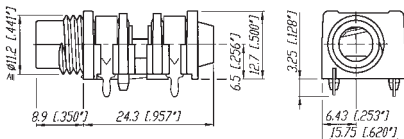


NRJ-NUT-MN

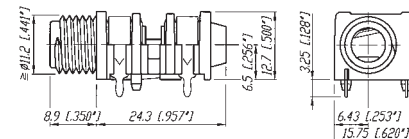
(Only compatible with metal nose).
Thread pitch is a 3/8" 32 UNEF 2A.



NRJ4HH-1



NRJ4HF-1



NRJ6HM-1

