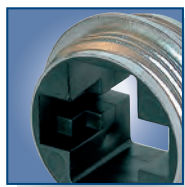


3 pole plug



SM2/2 switch



VM housing

## Modules & Audio Transformers



NM3FXI



NM3P



KMX



SM2/2

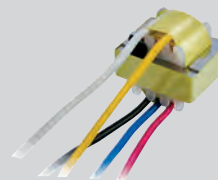


NM3FD-B

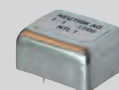
- Multifunctional modules allow to design customized adapters to suit specific needs
- Based on the X and D Series connector system
- NTE transformers and switch can be built in
- Professional look, rugged diecast shell

### Audio Transformer

- Professional audio transformers for multiple applications, as e.g. microphone or line inputs
- Very low distortion, excellent frequency response
- Cost effective cable version for free wiring
- Fully permalloy-shielded studio versions



NTE10-3



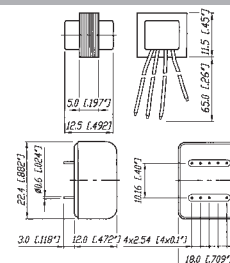
NTL1

### Audio Transformer selection Guide

Part No.	Turns Ratio (prim : sec)	Impedance ratio	Source / load impedance in $\Omega$	Max. Input level* @ 50 Hz, 1% THD [dBu]	Applications
NTE1	1 : 1	200 : 200	200 / 2k, (600 / 10k)	-3	General purpose, splitting, XLR inline
NTE4	1 : 4	200 : 3.2k	200 / 10 K	-7	Mic input step-up
NTE10/3	1 : 3	200 : 1.8k	200 / 10 K	-7	General purpose mic input step-up
	1 : 10	200 : 20k	200 / 50 K	-6	
NTL1	1 : 1	10k : 10k	600 / 10k	+19	Line input
NTM1	1 : 1	200 : 200	200 / 2k	+7	Mic input, splitting
NTM4	1 : 4	200 : 3.2k	200 / 10k	+9	Mic input step-up

\* : measured with typical source / load impedances

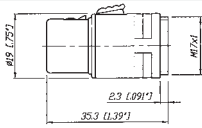
Wiring: NTE\*: free wires, NTL / NTM\*... PCB mount, shielded; Find detailed specifications on [www.neutrik.com](http://www.neutrik.com)



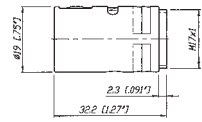
## Module Selection Guide

### Connector module

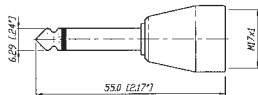
NM3FXI  
XLR female  
M17x1 outside



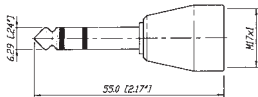
NM3MXI  
XLR male  
M17x1 outside



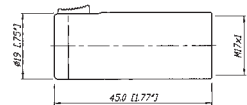
NM2P  
mono 1/4" plug  
M17x1 inside



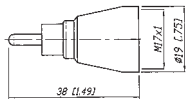
NM3P  
stereo 1/4" plug  
M17x1 inside



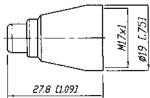
NM3J  
stereo 1/4" jack  
M17x1 inside



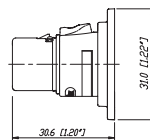
NMPMM  
RCA male  
M17x1 inside



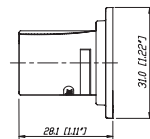
NMPMF  
RCA female  
M17x1 inside



NM3FD-B  
black plated  
D-Shape

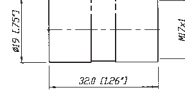


NM3MD-B  
black plated  
D-Shape

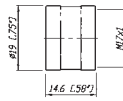


### Coupler / housing

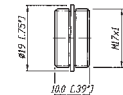
KM  
M 17x1 inside



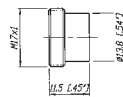
KMX  
M 17x1 inside



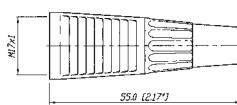
VM  
M 17x1 outside



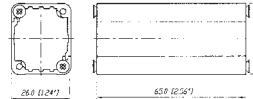
VMX  
M 17x1 outside



CM  
cable outlet  
M 17x1 inside

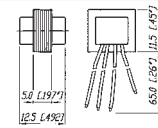


NA-Housing<sup>1)</sup>  
black plated  
screws included

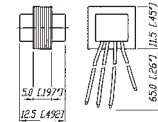


### Transformer / switch

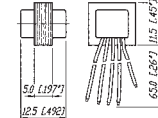
NTE1  
1:1



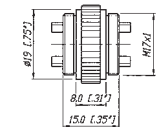
NTE4  
1:4



NTE10/3  
1:3:10

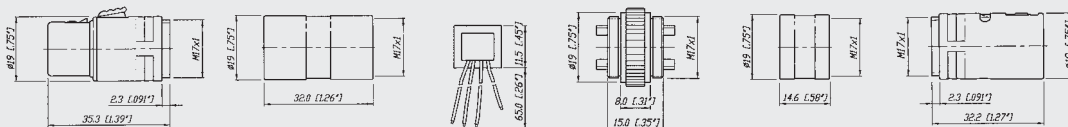


SM2/2  
2x2 switch  
M17x1 outside



1) ... Combinations possible with all D Shape connectors like e.g. NC3FD-L-1, NF2D, NBB75DSI, etc.

### Example:



NM3FXI

KM

NTE1

SM2/2

KMX

NM3MXI