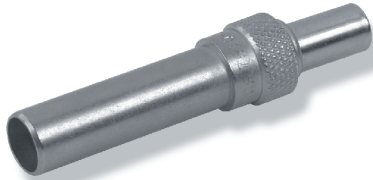
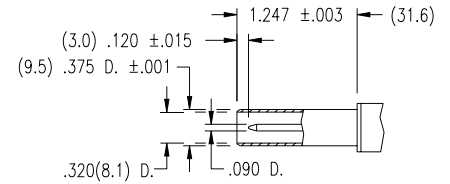
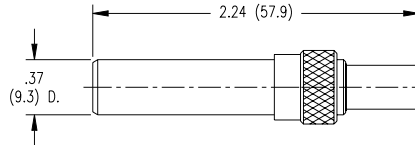


Note: These Patch Plugs are used with standard size video jacks, .090" Pin.



**P/N 7510-1
Patch Plug**

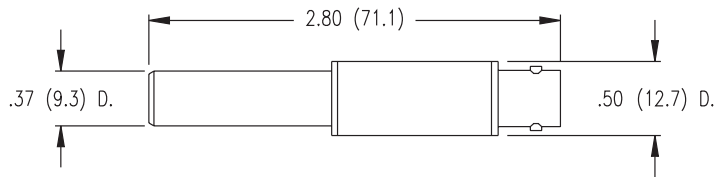


PATCH PLUG INTERFACE

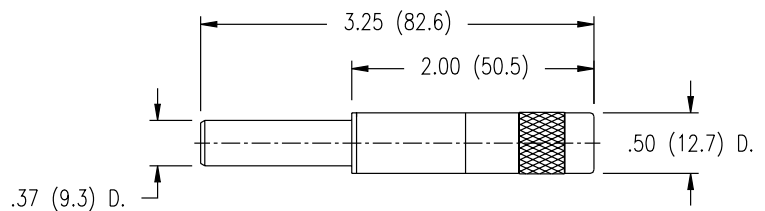
Connector	Kings Part No.	Pin Size	Cable	Crimp Die	Cabling
Patch Plug, Cable Entry	7510-1	.090"	RG-59/U	KTH-2002	CP-470
Patch Plug, Cable Entry	7510-2	.090"	BELDEN 9259	KTH-2002	CP-470
Patch Plug, Cable Entry	7510-4	.090"	BELDEN 8281	KTH-2010	CP-470
Patch Plug, Cable Entry	7510-16	.090"	BELDEN 1694A	KTH-2267	CP-470



**P/N 7510-5
Adapter, Patch Plug to BNC**



**P/N 7510-7
Patch Plug Termination**



Resistance: 75 ohms